



Mountain Ear

MONTHLY NEWSLETTER OF THE ROCKY MOUNTAINEERS
OF WESTERN MONTANA

VOL. 25, NO. 8
April, 1987

MONTHLY MEETING

TIME: 7:30 p.m.
PLACE: Montana Power Building - 1903 Russell
PROGRAM: Slides of Australia by Nancy Braun

ELECTION OF OFFICERS FOR 1987-1988

TRIP CALENDAR

Thursday, April 9 - Bicycle trip up the Old Milwaukee Railroad bed by the U of M; meet in the Fieldhouse parking lot, 6:00 p.m. Call Ralph Flockerzi - 549-9986. (Bicycles can be rented at Braxton's.)

Saturday, April 11 -

Sunday, April 12 -

Thursday, April 16 - Bicycle at the Blue Mountain Recreation Area. Meet at Blue Mountain parking lot at 6:00 p.m.. Call Ralph Flockerzi.

Saturday and Sunday, April 18 and 19 - Grey Wolf Peak (number of participants limited). Call Art Gidel, 543-6352.

Thursday, April 23 - Bicycle in the Rattlesnake; meet at Rattlesnake trailhead, 6:00 p.m.. Call Ralph Flockerzi.

Saturday, April 25 -

Sunday, April 26 -

Saturday and Sunday, May 2 and 3 - Heavenly Twins; strenuous overnight; skis, crampons and ice ax required. Call Art Gidel, 543-6352.

Saturday thru Tuesday, May 9, 10, 11, 12 - Mount Assiniboine in the Canadian Rockies, North Ridge Route Class 4, very easy Class 5. Steve Niday, 721-3790.

Sunday, May 10 - Peter Dayton will lead easy canoe trip on either lower Flathead or Clark Fork upstream from Bonner, depending on water conditions and ability of participants. Call Peter at 549-5805; work, 721-8300.

TRIP REPORTS

March 14 and 15, Joe Knotek, Carla Green, Rob Wogsland ventured to the Little St. Joe cabin; good weather, poor snow conditions; walked about half way, went to the top sun.

* * * * *

On Saturday, March 28, 1987, Ralph Flockerzi, Art Gidel, and I (Steve Niday) left Missoula at 4:00 p.m. and arrived at the Sundance Lodge around 7:00 p.m. Peter Dayton joined us late that night. It offers rooms, cabins, meals, bar, and other services, most of the year; call for more information. The Lodge is approximately 150 miles from Missoula via I-90 to Warm Springs, then southerly on Highway 274 to State Highway 43 and the Big Hole River, then four miles upriver to LaMarche Creek and about four miles up a privately-maintained dirt road.

Sunday morning we drove up Highway 43 to the county maintained road at Fishtrap Creek, opposite the Fishtrap Fishing Access. About $2\frac{1}{2}$ miles up this road at the end, there is a working ranch owned by Earnest Bacon, who we made prior arrangements with to park our car (elev. 6050'). We headed off to the NW with a clear sky and -11°F . temperature and intersected the trail up the Middle Fork Fishtrap Creek at the top of a clearcut (elev. 6300'). There is a road at this point that comes up Calvert Creek, but it was not maintained this winter. We followed the trail up to around 7700', then headed directly toward the south ridge of E. Goat Peak and up this to E. Goat Peak (elev. 10,399'), then along the ridge to W. Goat Park. The descent route was approximately the same. The snow was windpacked hard about the tree line, sparse near the bottom, shallow, and generally well consolidated. The horizontal distance one way is about $9\frac{1}{2}$ - 10 miles. We arrived back at the car at sunset a little tired and sunburned but satisfied. The views from the top were great in all directions, and we were able to identify some of the peaks in the Bitterroot Range.

* * * * *

Trapper Peak, March 22, Sunday. After an early, 5:00 p.m., K-Mart rendezvous, eight sleepy skiers were pleasantly surprised by a plowed logging road to the 6,000 foot level. As one might imagine, leader Art Gidel received some undeserved abuse regarding the unnecessary early morning start. In his defense, I would point out that the views from the summit disappeared into the fog only a few minutes after our 11:00 a.m. arrival, not to return for the remainder of the day. Those participants behaving themselves were Margaret Hillhouse, Scott Belknap, Nancy Bauer, and Steve Niday. The initials of the three outspoken misfits are RF, PK, and DP. Submitted by Art Gidel.

St. Mary's Peak, March 15, 1987. Carol Anderson, Beverly Chin, Peter Dayton, Ralph Flockerzi, Art Gidel, Wayne Hacker, Steve Niday, Dave Pengelly, Bobbi and Dick Rossigno and Martha Yale skied to St. Mary's Peak. In fine Rocky Mountaineer's tradition, we managed to drive about 300 yards farther up the road after chaining up the four-wheel drive vehicles. We managed to drive most of the way to the trailhead, so the trip to the top was relatively straightforward. We had a nice clear view on top until Peter Dayton arrived and it then clouded up (as usual). The trip down was exciting due to the inconsistent, crusty snow. Submitted by Dave Pengelly.

ANNOUNCEMENT

Bikecentennial is seeking a small cadre of local or area residents to work as paid leaders for one or more week-long mountain bike or paved road bicycle tours in the northwest. Requires travel experience, basic mechanical ability, some cooking skills, and an outstanding ability to enjoy being with groups of adults. Also CPR and first aid knowledge required. Contact Stuart Crook, Bikecentennial, P. O. Box 8303, Missoula, MT 59807; phone 721-1776.

MEMBERSHIP APPLICATION

NAME: _____

Mail a check payable to

ADDRESS _____

"Rocky Mountaineers" to Arnold Finklin

PHONE _____

P.O. Box 7795, Missoula, Montana 59807

CHECK ONE: Individual \$6.00/year _____ Family \$8.00/year _____

For all your shoe repairs, zipper repairs, hiking boots resoled - come to 1230 W. Kent - north end of Tremper's Shopping Center

Lloyd's
SHOE REPAIR



**BRAXTON
BIKE SHOP**

"AN OASIS FOR THE
CYCLO-TOURIST"

1987 bicycles now on display.
CANNONDALE . PEUGEOT . ROSS . UNIVEGA
CENTURION 'Ironman'
MOUNTAIN BIKES AS LOW AS \$219.95.

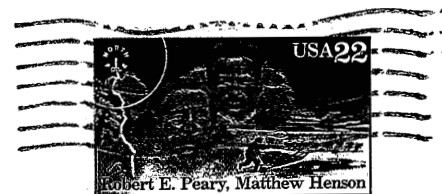
WE RENT CANNONDALE MOUNTAIN BIKES!

PARTS.REPAIRS.ACCESSORIES.CLOTHING

2100 South Ave. W.
Missoula, MT 59801

549-2513

The Mountain Ear
P. O. Box 4262
Missoula, Montana 59806



FIRST CLASS MAIL

Dave Line
1135 Whitaker Drive
Missoula MT 59803