



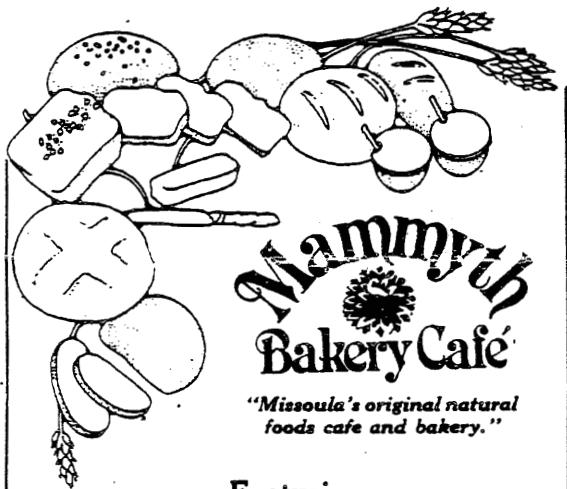
Mountain Ear

MONTHLY NEWSLETTER OF THE ROCKY MOUNTAINEERS
OF WESTERN MONTANA

JUNE 1985
Volume 23, No. 10

NEW TRIPS

- June 8-9 -- McDonald Peak, Mission Mountains. Ice axe and crampons (probably) required. Strenuous. Call Art Gidel at 543-6352.
Sat-Sun
- June 14 -- Potluck and Volleyball at Bonner Park, 6:30 p.m. Bring a favorite dish, plate, utensils and beverage.
Friday
- June 22-23 -- George Lake, Swan Range. Fisher Peak may be climbed from the lake. Fairly strenuous. Call Ralph Flockerzi at 549-9986.
Sat-Sun
- June 29-30 -- Location to be announced in the Missoulian or call Art Gidel at 543-6352.
Sat-Sun
- July 6 -- Date and destination to be finalized later. Call Lois Crepeau at 728-5321 for details.
Sat
- July 21 -- Summit Lake, Mission Range. Approximately 15 miles round trip with 3000 vertical feet elevation gain. Call Martha Yale at 549-2163 for further information.
Sunday



Mammoth Bakery Cafe

"Missoula's original natural foods cafe and bakery."

Featuring:

- fresh breads, bagels, pita
- luscious pastries
- homemade soup & sandwiches
- hot vegetarian entrees
- Mexican dinner Friday evening
- salad bar
- fresh juices & smoothies and much more!

Mon.-Fri. 8 a.m.-6 p.m.
Fri. evening 'til 8 p.m.
131 West Main
549-5542

L

When you can't afford to gamble



Quality Boots
are our ol' ace in
the hole pardner.
*We fix 'em an' resole
'em an' restitch 'em.*
Come to us for all your
shoe repair needs

L

Blond's
SHOE REPAIR

1230 W. Kent
Tremers Shopping Center

TRIP REPORT

May 14-16 -- Southern Mission Mountains

Although no one called regarding this trip, I spent an enjoyable 3 days skiing and climbing solo in the Southern Missions. The skiing was very good once the sun softened up the surface, usually by 8:30 a.m. The trip from the east to the upper end of Greywolf Lake was made immeasurably easier than in summer by skiing the southern shoreline (I tried skiing across the lake on the way in, but after one ski broke thru I gave up this silly notion).

Skiing to the East St. Mary's Peak area was straight forward, with only one pass requiring an ice axe. I climbed East St. Mary's and Peak X, the former requiring an ice axe and the latter an easy scree slope walk up. The summit register on Peak X illustrates the remoteness of the Vacation Pass Area -- approximately 15 parties since 1972, with only two entries since 1980! This is the most spectacular area I've visited in the Missions.

Other more difficult climbs requiring a partner this time of year would be West St. Mary's Peak, and of course Greywolf Peak. Greywolf Peak would have been entirely on snow!

Avalanche danger was only moderate, if the proper routes were taken. However, the late afternoon sun allowed the snow to "breathe freely" as I skied across it, a most disconcerting feeling indeed.

-- Art Gidel

THE MOUNTAIN EAR is a publication of The Rocky Mountaineers, an outdoor group which is open to new members at any time. Membership dues are \$5.00 per person or \$7.50 per family annually and should be sent to treasurer Arnold Finklin, Box 4262, Missoula MT 59806.



"AN OASIS FOR THE CYCLO-TOURIST"

SPECIALIZING IN BICYCLE ASSEMBLY, WHEEL BUILDING, FRAME BUILDING & REPAIR, SANDBLASTING, PAINTING

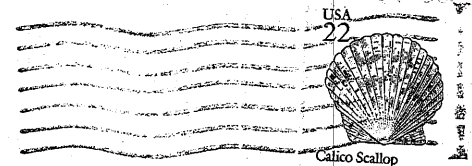
REPAIRS PARTS ACCESSORIES

2100 South Ave. W. Missoula, Montana 59801

Sam, Shiri, Barr & Dair Braxton Phone (406) 549-2513

The Mountain Ear
P.O. Box 4262
Missoula MT 59806

FIRST CLASS MAIL



Dave Line
1135 Whitaker Drive
Missoula, MT 59803